

Installation Instructions

Duraweave - Computer Yarn Placement (CYP) Carpet

These instructions are a must read before installing any Duraweave Computer Yarn placement carpet.

STOP

**Before cutting any of this carpet
you must check for the following...**

- 1) **Quality – Is this what you ordered?**
- 2) **Color – Is it the right color?**
- 3) **Pattern – Is the pattern correct?**
- 4) **Size – Is the size correct?**
- 5) **Yarn or Dye Lots – Are they correct?**
- 6) **Inspect carpet for any visual defects.**

Prior to installation --- All carpet should be rolled out and stored at 70° or more for a minimum of twenty-four hours.

Read all instructions prior to beginning any installation.

If material has been cut, fitted or installed, no adjustments or claims will be considered for any of the above reasons.

Installation Information For Duraweave Computer Yarn Placement

Marabella recognizes the Carpet and Rug Institute "Standard for Installation of Commercial Textile Floor Covering Materials", also known as CRI 104 as the basic industry guideline for the installation of commercial patterned carpet. This document is a supplement to CRI 104 highlighting techniques to be used with Marabella's Duraweave CYP carpets.

This carpet was tufted on a Computerized Yarn Placement (CYP) machine among the latest technology for patterned carpet manufacturing.

Please read these instructions carefully to ensure a proper and satisfactory installation.

Marabella requires the use of premium multi-purpose adhesives for the installation of our products. Marabella also requires the use of seam sealer on all cut edges. In addition, we require the use of commercial quality, preferably six inch, seam tape on stretch-in and double stick installations.

Pattern Match – This carpet has been inspected very carefully to ensure that the pattern can be properly matched. Our maximum tolerance for bow, skew, or pattern repeat is 1%. Most production finishes significantly under our 1% tolerance.

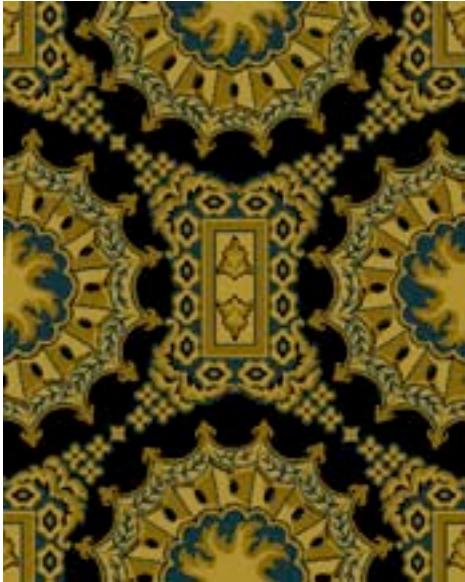
Please do not hesitate to call Marabella 877-627-2235 to get any additional information or clarification that you need.

1. Install rolls that are to be seamed together in numerical sequence unless otherwise instructed by a Marabella representative. If our inspection shows that the rolls should be installed without following the roll sequence, you will be notified accordingly.
2. Double check the pattern length on rolls that will be seamed together and always install the roll with the longer repeats first. Then the next roll can be stretched, if necessary, to match the longer repeat. When installing Duraweave with more than one breadth, pattern repeat length should be measured to determine breadth placement.

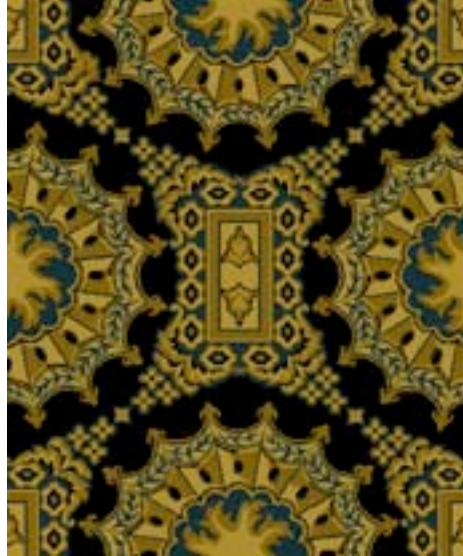
For example: 2' pattern match...

Drop A	15 patterns measure 30'2"
Drop B	15 patterns measure 30'1"
Drop C	15 patterns measure 29'11"
Drop D	15 patterns measure 30'2"
Drop E	15 patterns measure 30'

Proper breadth placement in this example is A, D, B, E, C. Always stretch the short to meet the long.



Install First



Install Second &
Stretch To Match

The pattern lengths of all drops that are to be seamed together must be checked. The drops must be installed so that you are always stretching a shorter pattern to a longer one if necessary. This procedure is critical in that it is impossible to shrink a longer pattern to match a shorter one.

3.) Side Match – This carpet is designed to side match by cutting off the excess trim that is clearly visible on the carpet. There is a fine line void between the field pattern and the trim. Run a screwdriver or sharp tool along the line to define the cutting line. Then use a row cutter to cut exactly along the line. Do not cut into the field of the carpet at all when installing full breadth drops side to side.

When matching pattern within the field of the carpet for less than full width drops the following technique is recommended for Duraweave CYP products:

- 1) Pick an easily discernable point in the pattern. Separate the tufts in that area and cut a small slit in the direction of the seam. Repeat this procedure the entire length of the drop.
- 2) Turn the carpet over and using a straight edge to follow the slits, cut the carpet from the back. When cutting the carpet be sure to set the depth of the knife so as to just cut through the carpet backing thus minimizing any cutting of tufts on the face.

This technique will be repeated for both sides to be seamed together.

The installation of patterned carpet requires skill and attention to detail. If you do not fully understand everything in this instruction, please stop the installation and notify Marabella or whomever you contracted with to do this job.

These instructions only highlight techniques that are related to Duraweave CYP characteristics. For a more detailed instruction on commercial carpet installation see publication **CRI 104** which can be obtained by calling the Carpet and Rug Institute at 800-882-8846 or Marabella at 877-627-2235.

To install commercial patterned carpet properly you must use the proper tools and techniques. You must use... sharp tools for cutting, seam sealer on all cut edges, a power stretcher, a dead man, stay tacks plus any other tools necessary to professionally match the pattern.